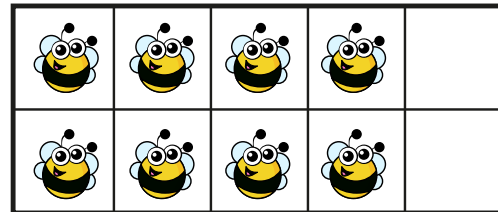
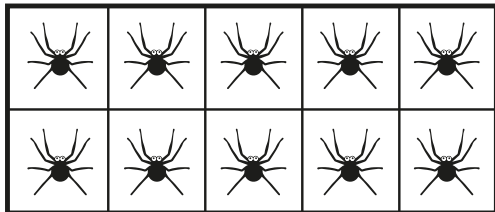
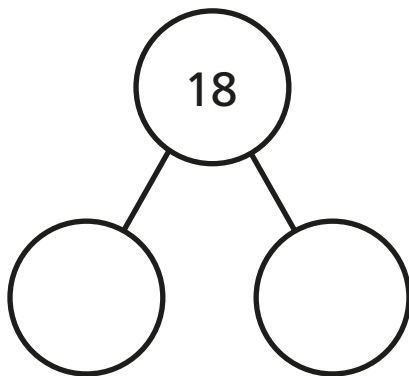


Related facts

I Look at the picture.



Complete the part-whole model and fact family.



$$\square + \square = 18$$

$$\square + \square = 18$$

$$18 - \square = \square$$

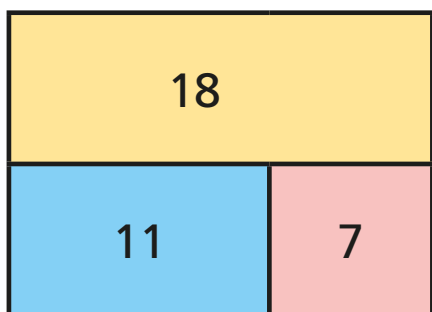
$$18 - \square = \square$$

Can you write each number sentence a different way?



2

Complete the fact family for each bar model.

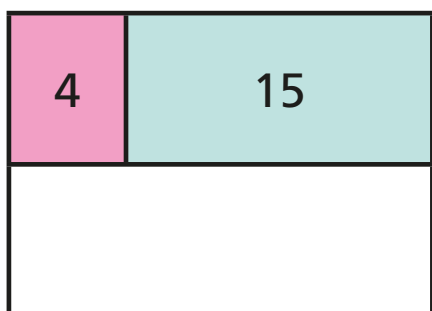
a)

$$\square + \square = \square$$

$$\square + \square = \square$$

$$\square - \square = \square$$

$$\square - \square = \square$$

b)

$$\square = \square + \square$$

$$\square = \square + \square$$

$$\square = \square - \square$$

$$\square = \square - \square$$

c) Draw your own bar models.

Ask a partner to write the fact family to match.

